

Style
Luxury is in the details
Elegance

Mirror Quilt

Sewing Instructions for Quilt Top

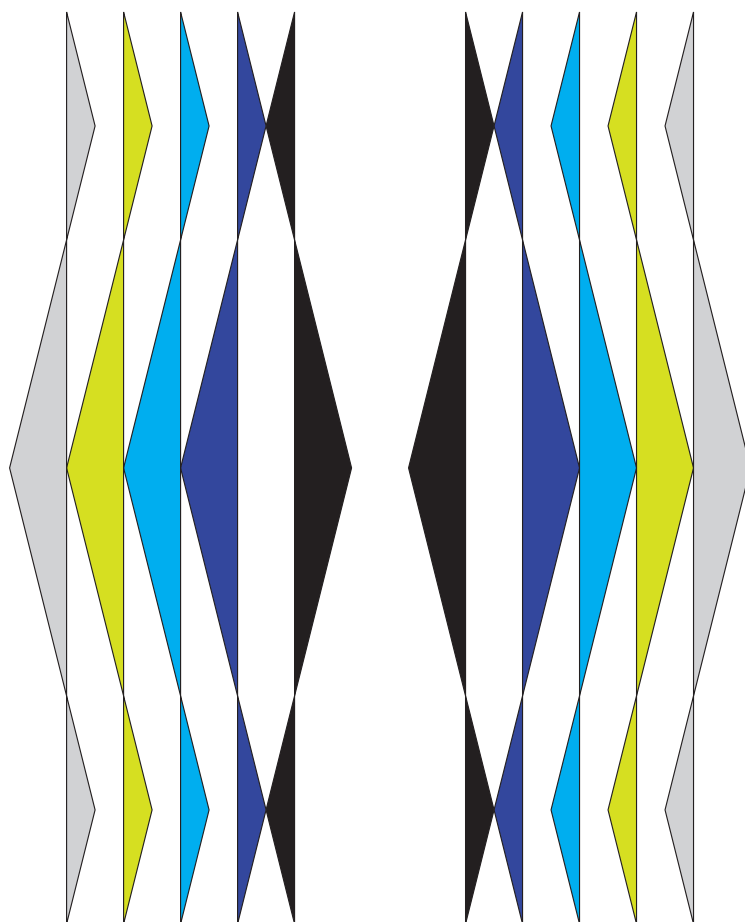


Mirror Quilt

This geometric pieced quilt will make a stylish statement in any room!

| | |
|---------------------|--|
| Skill Level: | Confident Beginner |
| Sewing Machine: | performance icon™ |
| Fabric: | <ul style="list-style-type: none"> • 6½ yards white (background fabric), ½ yard each of 5 accent colors ranging from light to dark • Binding fabric: ¾ yard (if using 2½in straight-of-grain binding strips) • Backing fabric: 90in x 110in |
| Threads: | <ul style="list-style-type: none"> • All-purpose 50 wt thread for quilting • White thread for the background and lighter accent colors, and gray for the darker accent colors |
| Needles: | INSPIRA™ sewing machine needle size 80 |
| PFAFF® Accessories: | <ul style="list-style-type: none"> • Use the ¼ inch foot for sewing the seams and a free-motion quilting foot for quilting • Use the standard sewing foot for sewing the binding on |

Full Layout



Cutting Instructions:

Prepare Templates:

1. Print and cut the templates provided in the last pages of these instructions.
 2. Tape Template B1 and B2 together, as directed on the templates, to become Template B.
-

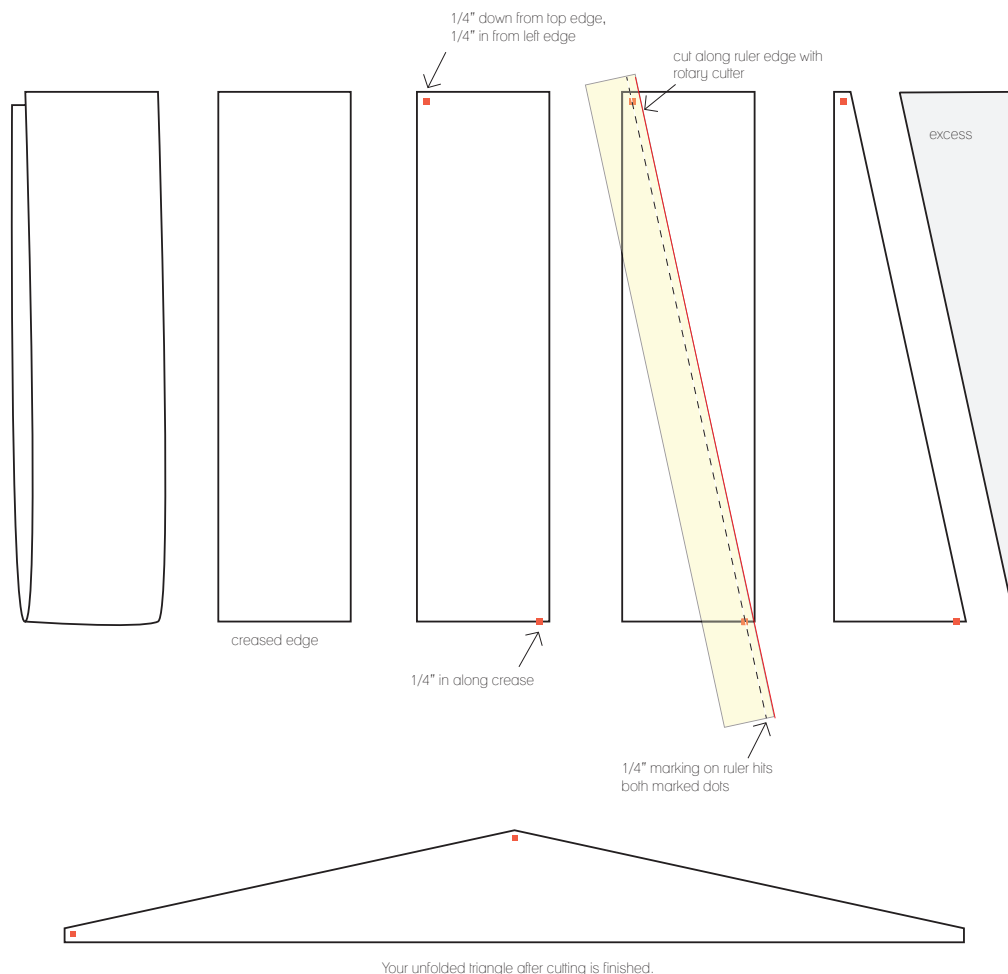
White/ Background fabric:

1. **Cut (6) strips** 2½in x width of fabric
Cut out (40) pieces using Template A
*If using a printed fabric, cut 20 with template face up and 20 with template face down.
 2. **Cut (5) strips** 4½in x width of fabric
Cut out (20) pieces using Template B
*If using a printed fabric, cut 20 with template face up and 20 with template face down.
 3. **Cut (2) strips** 16½in x width of fabric
Subcut:
 - (12) pieces 2½in x 16½in (Piece C)
 - (4) pieces 4½in x 16½in (Piece D)
 - (2) pieces 12½in x 16½in (Piece E)
 4. **Cut (3) strips** 4½in x width of fabric
Subcut (3) pieces 4½in x 32½in (Piece F)
 5. **Cut (1) section** 64½in x width of fabric
Subcut lengthwise into (2) pieces 14½in x 64½in (Piece G)
 6. **Cut (1) section** 80½in x Width of fabric
Subcut lengthwise into (2) pieces 18½in x 80½in (Piece H)
-

Accent Colors 1 - 5, from each fabric:

1. **Cut (2) strips** 4½in x width of fabric
Subcut (2) pieces 4½in x 32½in (Piece I)
2. **Cut (2) strips** 2½in x width of fabric
Subcut (4) pieces 2½in x 16½in (Piece J)

Use the illustration to complete the following steps for Pieces I and J.



1. Take one piece. Fold in half precisely and crease lightly to hold fold.
2. Using your preferred marking tool, mark a dot $\frac{1}{4}$ inch in from fabric edge, along the crease (bottom right corner).
3. Mark a second dot in the upper left hand corner, $\frac{1}{4}$ in down and $\frac{1}{4}$ in to the right.

4. Place a clear grid ruler on top of your fabric. Line up the $\frac{1}{4}$ in line with each dot, with the edge of the ruler on the right side. Cut along the ruler with a rotary cutter.
5. Unfold fabric and lightly press out the crease.

Repeat with all remaining color rectangles.

Piecing Instructions:

Piece the smaller triangle units:

1. Sew together (1) Piece A and (1) Piece J along the diagonally cut edges. Press toward background fabric.
2. Sew on (1) Piece A to finish making the rectangle. (see step 1 on next page)

Repeat with all remaining Pieces A & J.

Piece the larger triangle units:

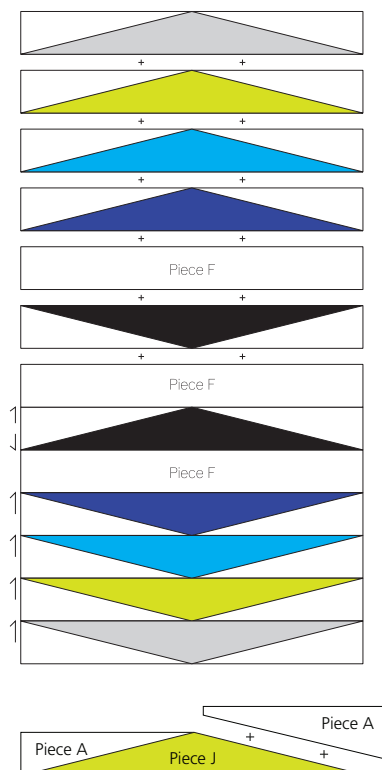
1. Sew together (1) Piece B and (1) Piece I along the diagonally cut edges. Press toward background fabric.
2. Sew on (1) Piece B to finish making the rectangle. (see step 1 on next page)

Repeat with all remaining Pieces B & I.

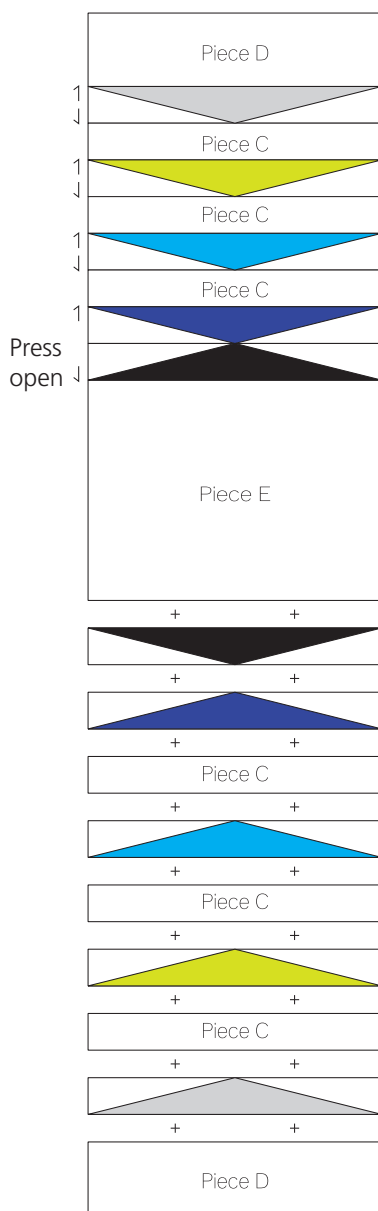


Piece the Quilt Top

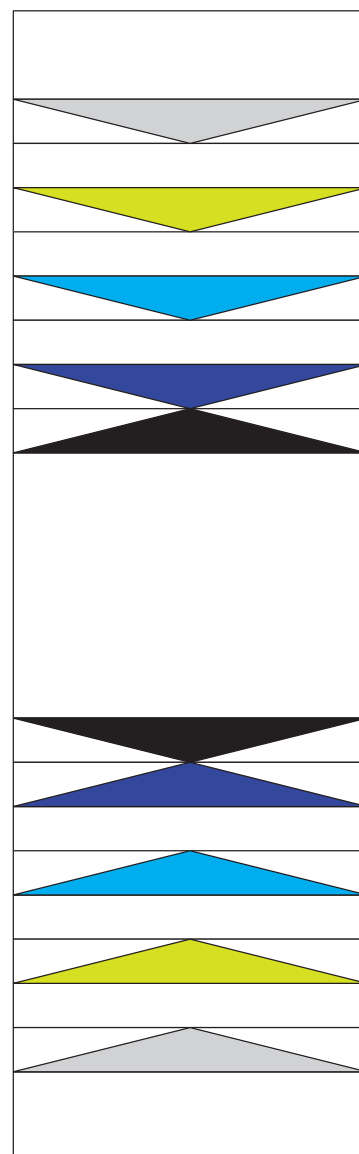
1. Sew together the:
(10) large triangle unit
(3) Pieces F
Press as indicated.



2. Sew together:
(10) small triangle units
(2 of each color)
(6) Pieces C
(2) Pieces D
(1) Pieces E
Press as indicated.

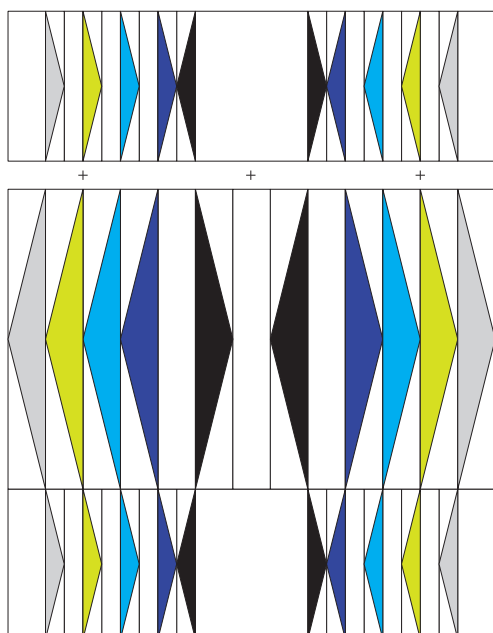


3. Repeat Step 2 to create a second, identical pieced strip.

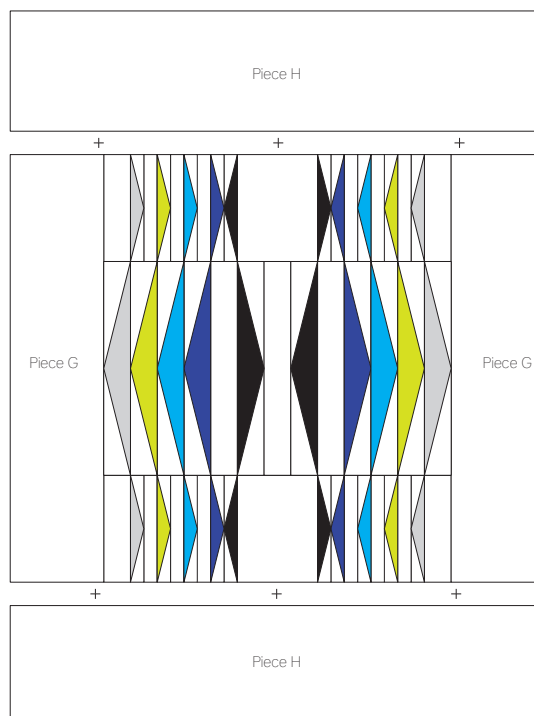


Piece the Quilt Top (continued)

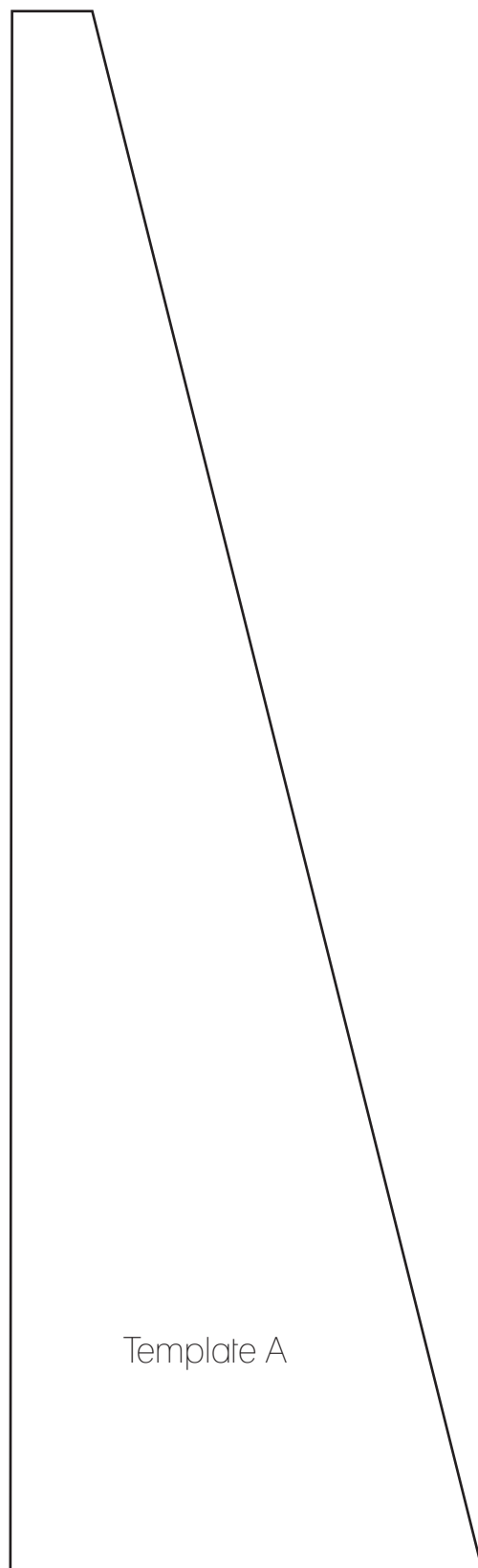
- 4.** Sew together the pieced sections as shown in diagram. Press open.



- 5.** Sew on Pieces G. Press toward border.
6. Sew on Pieces H. Press toward border.



- 7.** Quilt your lovely new quilt top as you desire!



Template A

